

# Town of Lexington Office of Community Development Health Division



Board of Health  
Emergency Preparedness Update

## “Current Health Division Projects”

Local Emergency Plans

Regional Planning

Communication Networks

Staff Training

Training for MRC Volunteers

Completed Exercises

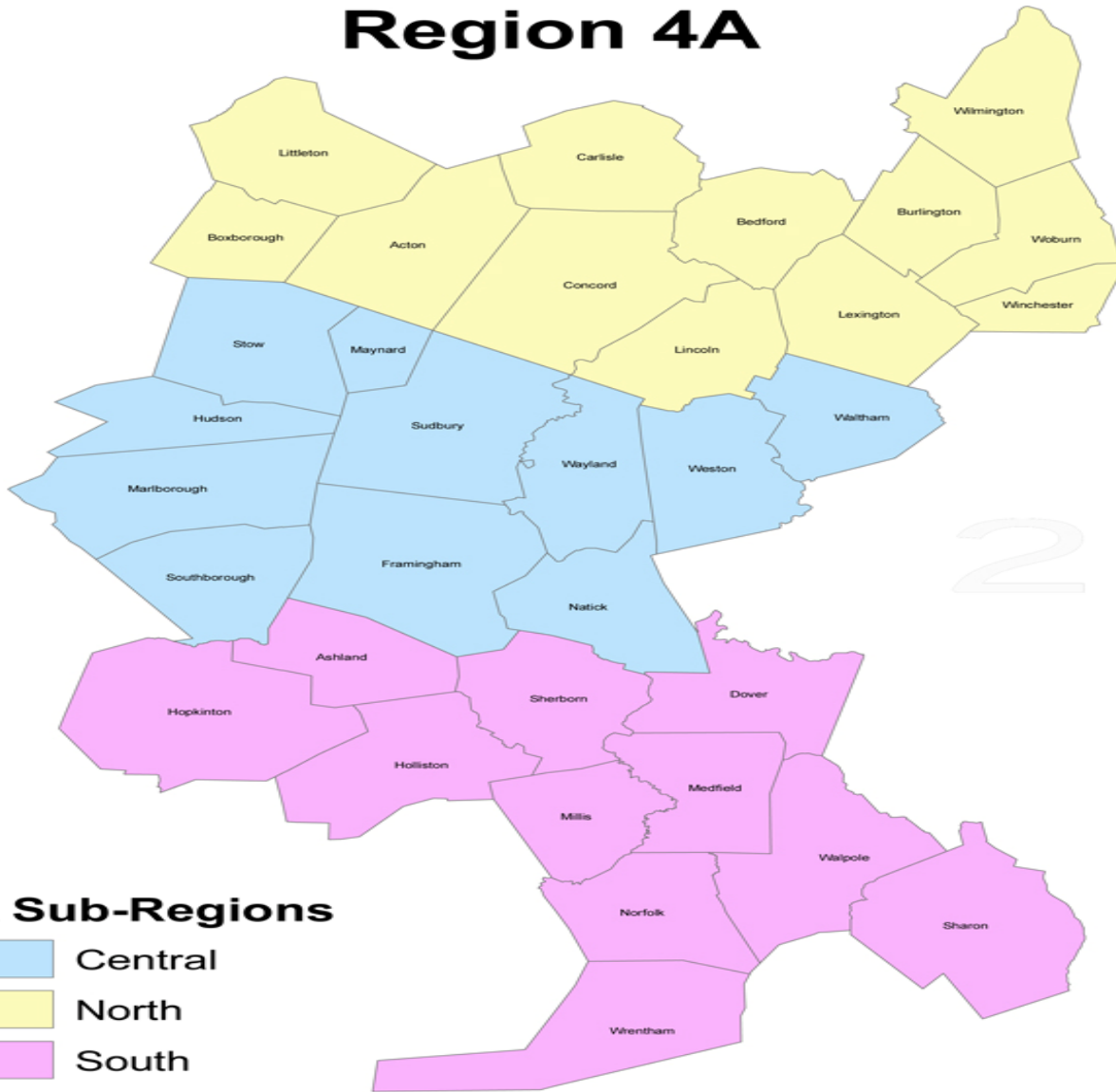
# Local Emergency Plans

- Risk Communication Plan
- Infectious Disease Emergency Plan
- Emergency Dispensing Site
- Continuity of Operations (CoOp)

# Region 4A

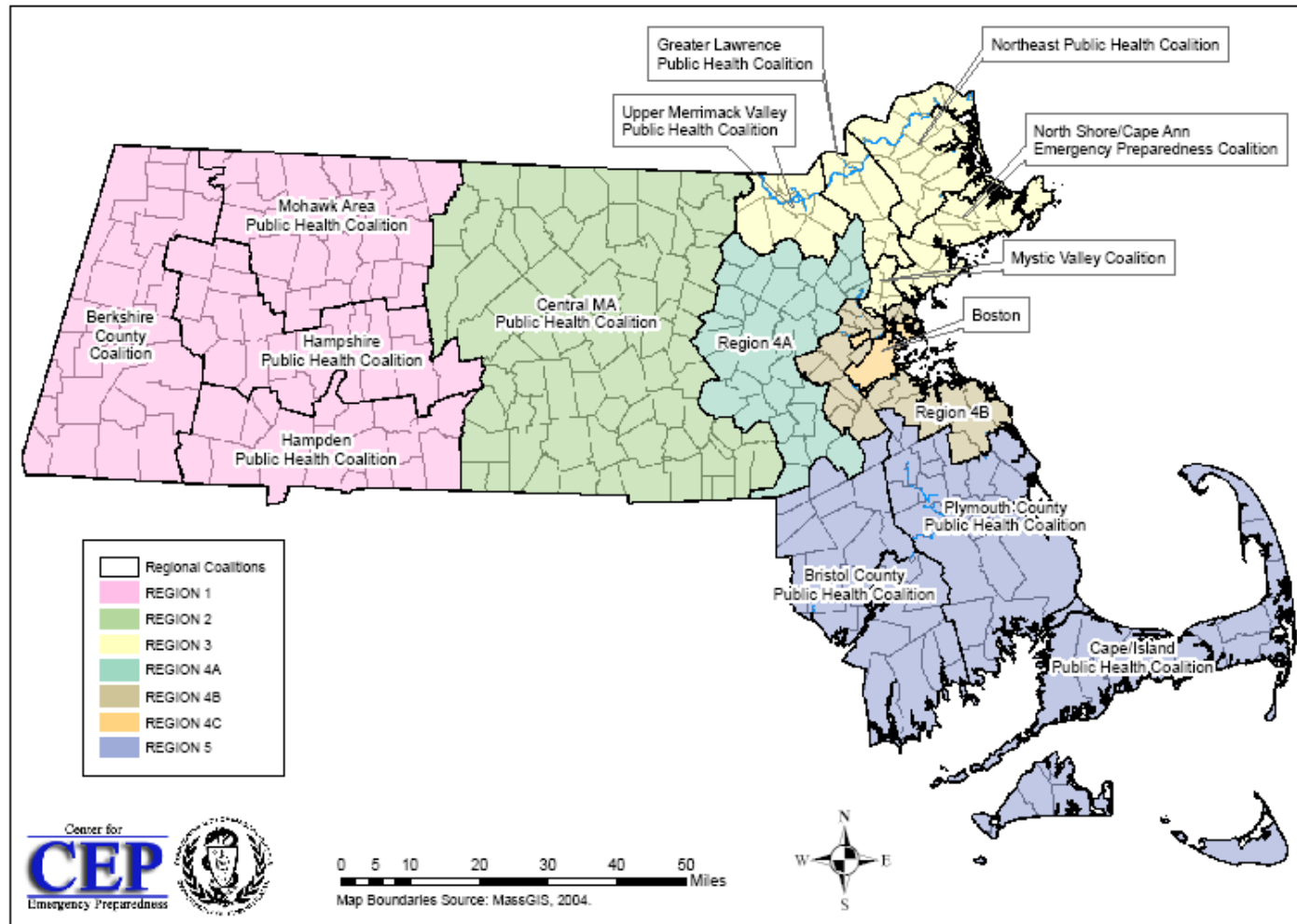
Acton	Hudson	Sherborn
Ashland	Lexington	Southborough
Bedford	Lincoln	Stow
Boxborough	Littleton	Sudbury
Burlington	Marlborough	Walpole
Carlisle	Maynard	Waltham
Concord	Medfield	Wayland
Dover	Millis	Weston
Framingham	Natick	Wilmington
Holliston	Norfolk	Winchester
Hopkinton	Sharon	Woburn
.	.	Wrentham

# Region 4A



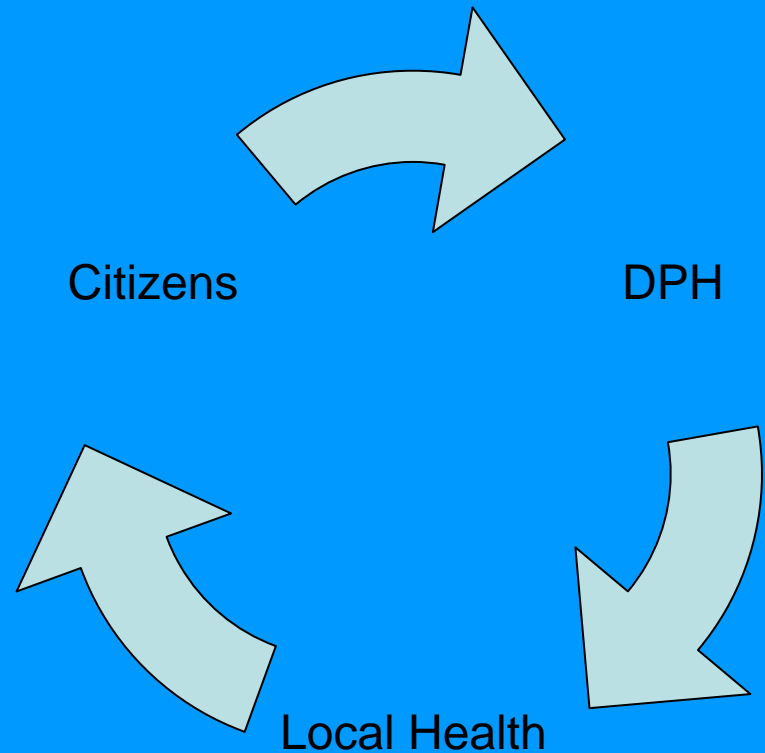
# Coalitions for Health Emergencies - Statewide

MDPH Emergency Preparedness Regions and Regional Coalitions  
Established 2004



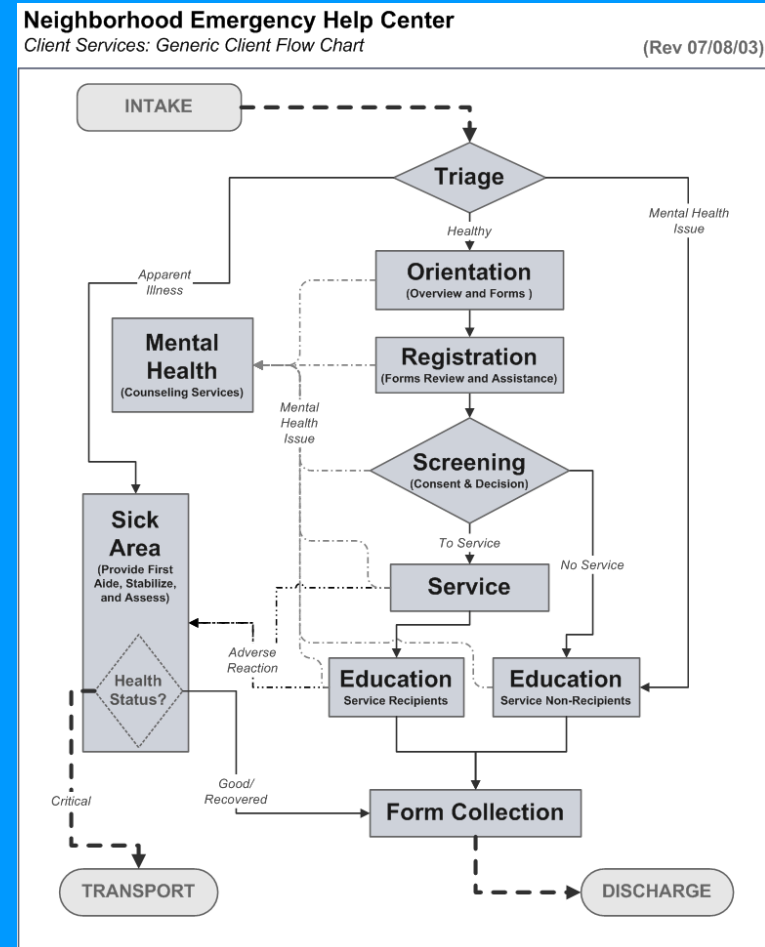
# Communication Networks

- Homeland Health Alert Network
- Food Recalls
- Infectious Outbreaks
- Vaccine Updates



# Staff Training

- ICS 100 & 700 - Incident Command Structure
- Job Action Sheets for Emergency Dispensing Sites



# Volunteer Training

- **Medical Reserve Corp**
- **Upcoming Events**
- **Flu: What You Can Do - Caring for People at Home Thursday, October 22, 2009 at Cary Hall 1605 Massachusetts Avenue from 6:00 PM to 7:30 PM**
- **Learn about flu prevention, caring for someone with the flu, and preparing for flu season. It is also applicable to a pandemic situation where hospitals and clinics may already be at full capacity.**
- .

# Completed Exercises

- **November 22, 2008, sub regional EDS between Burlington Winchester and Lexington. Tested the delivery of a shipment of medicine from the Strategic National Stockpile.**
- **November 1, 2008, EDS style flu clinic and training exercise at Cary Hall. Health Staff and MRC volunteers vaccinated 705 citizens in 120 minutes.**

# EDS – Citizen Participation



**Citizens line up at Cary Hall in order to participate in the EDS clinic. Medical Reserve Corp staff can be seen patrolling the line as a part of the Clinic Flow station.**

# EDS – Registration



- Citizens are required to complete a medical registration form before receiving a vaccination.

# EDS – Clinic Flow



- MRC Clinic Flow volunteers engage citizens and determine which vaccination station is available for the next patient.

# EDS – Vaccination Station



- All of the vaccination stations are clearly numbered in order to direct citizens to the next available location.

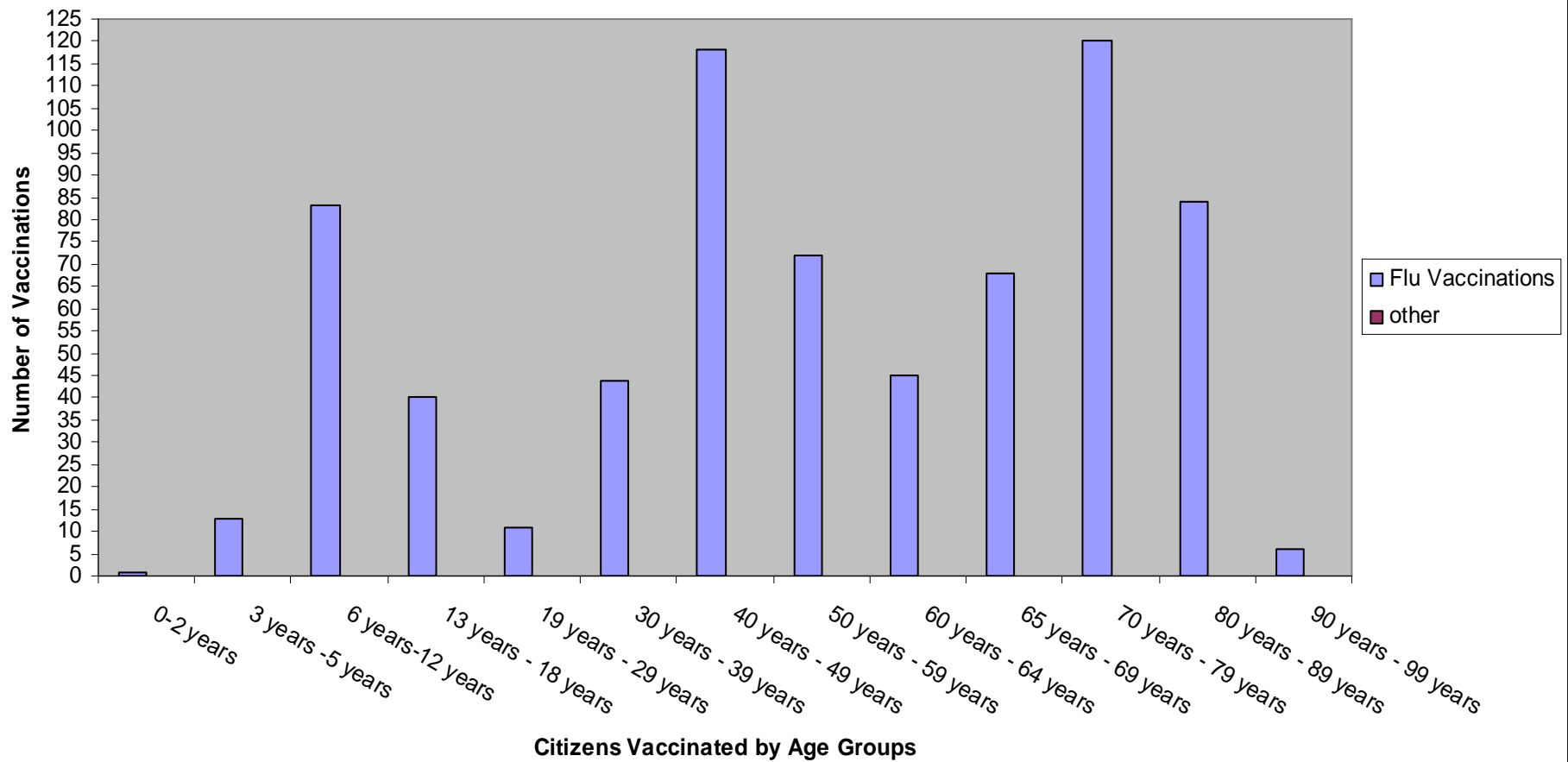
# EDS –Staff



- One Clerical Unit Supervisor, manages the Registration tables and Clinic Flow Staff.
- One Clinical Unit Supervisor monitors the progress of the RN's and helps to troubleshoot any supply or technical questions.

# EDS – November 1, 2008 Results

Flu Clinic / EDS  
November 1, 2008



# Emergency Planning is a Team Effort between a variety of Town of Lexington Departments

