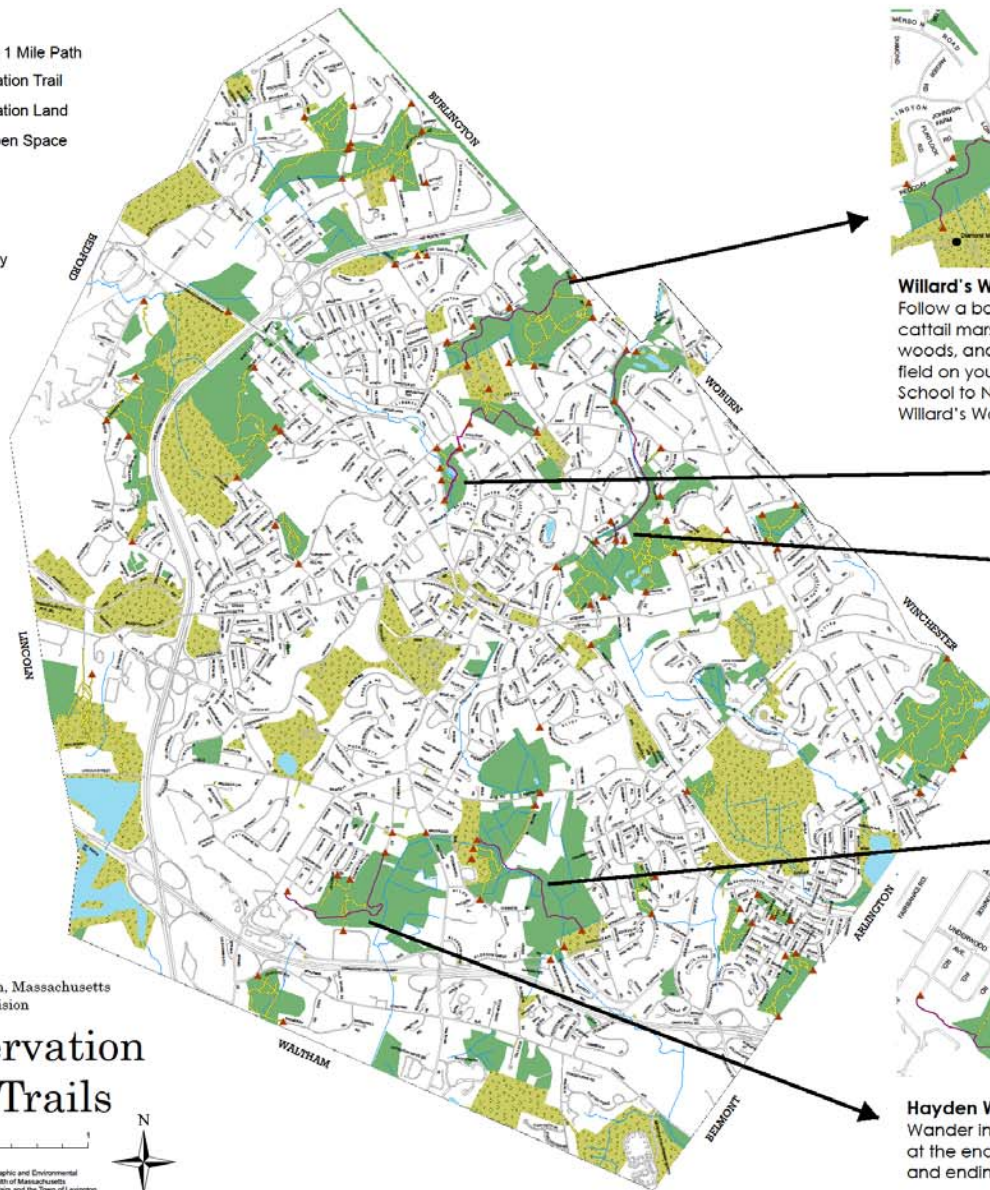


Find Your Path in Lexington

In Lexington's 2011 Community Book, *The Path: A One Mile Walk through the Universe*, author Chet Raymo describes a 1-mile path that he followed daily for 37 years. To find your own path here in Lexington, check out these suggested 1-mile trails, all of which travel across Lexington's conservation land.

Legend

-  Featured 1 Mile Path
-  Conservation Trail
-  Conservation Land
-  Other Open Space
-  Stream
-  Pond
-  Street
-  Trail Entry



Willard's Woods
Follow a boardwalk through a cattail marsh, wind through the woods, and cross an old farm field on your way from Diamond School to North Street through Willard's Woods.



Chlesa Farm & Parker Meadow
Explore fields, forests, and a small pond by entering Chlesa Farm from Adams Street, exiting at Pilgrim Church, crossing Coolidge Street, and entering Parker Meadow from Hancock Street.



Lower Vine Brook
Stroll along a forested recreation path that sticks close to the Vine Brook from Fairfield Drive and Saddleclub Road to North Street.



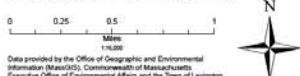
Dunback Meadow
Pass through wet forest and meadow while you travel along Clematis Brook between Bowman Elementary School and Clarke Middle School.



Hayden Woods
Wander in a rich forest, starting at the end of Valleyfield Street and ending at Munroe Road.

2011
Town of Lexington, Massachusetts
Conservation Division

Conservation Land Trails



Data provided by the Office of Geographic and Environmental Information (MassGIS), Commonwealth of Massachusetts, Executive Office of Environmental Affairs, and the Town of Lexington

Want More?

The paths highlighted here are just a handful of the many trails to explore across Lexington. For more conservation trail maps, visit the Town of Lexington Conservation Division's website at: www.lexingtonma.gov/conservation/consland.cfm

Trails on property that is managed by an agency other than the Lexington Conservation Division may not appear on this map, such as:

- Arlington's Great Meadow (Friends of Arlington's Great Meadow)
- The Arlington Reservoir (Town of Arlington)
- Beaver Brook North and Lot 1 (MA Department of Conservation and Recreation)
- The Old Res (Lexington Recreation Department)
- Lincoln Park (Lexington Recreation Department)
- Hebb's Brook Basin (City of Cambridge)
- MinuteMan National Historic Park (U.S. National Park Service)

Trail maps for these properties may be available through the agencies listed above or on www.openstreetmap.org.