

PROPOSED MIXED-USE DEVELOPMENT
PRELIMINARY SITE DEVELOPMENT AND USE PLAN (PSDUP)
 186 BEDFORD STREET
 LEXINGTON, MA
 OWNER/APPLICANT: 186 BEDFORD STREET, LLC

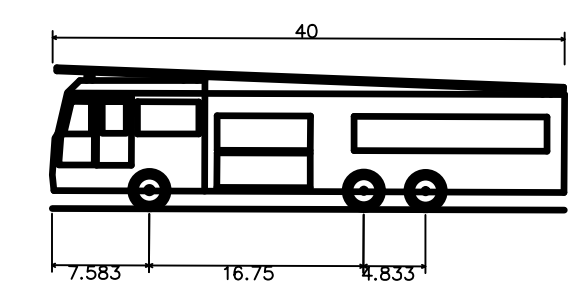
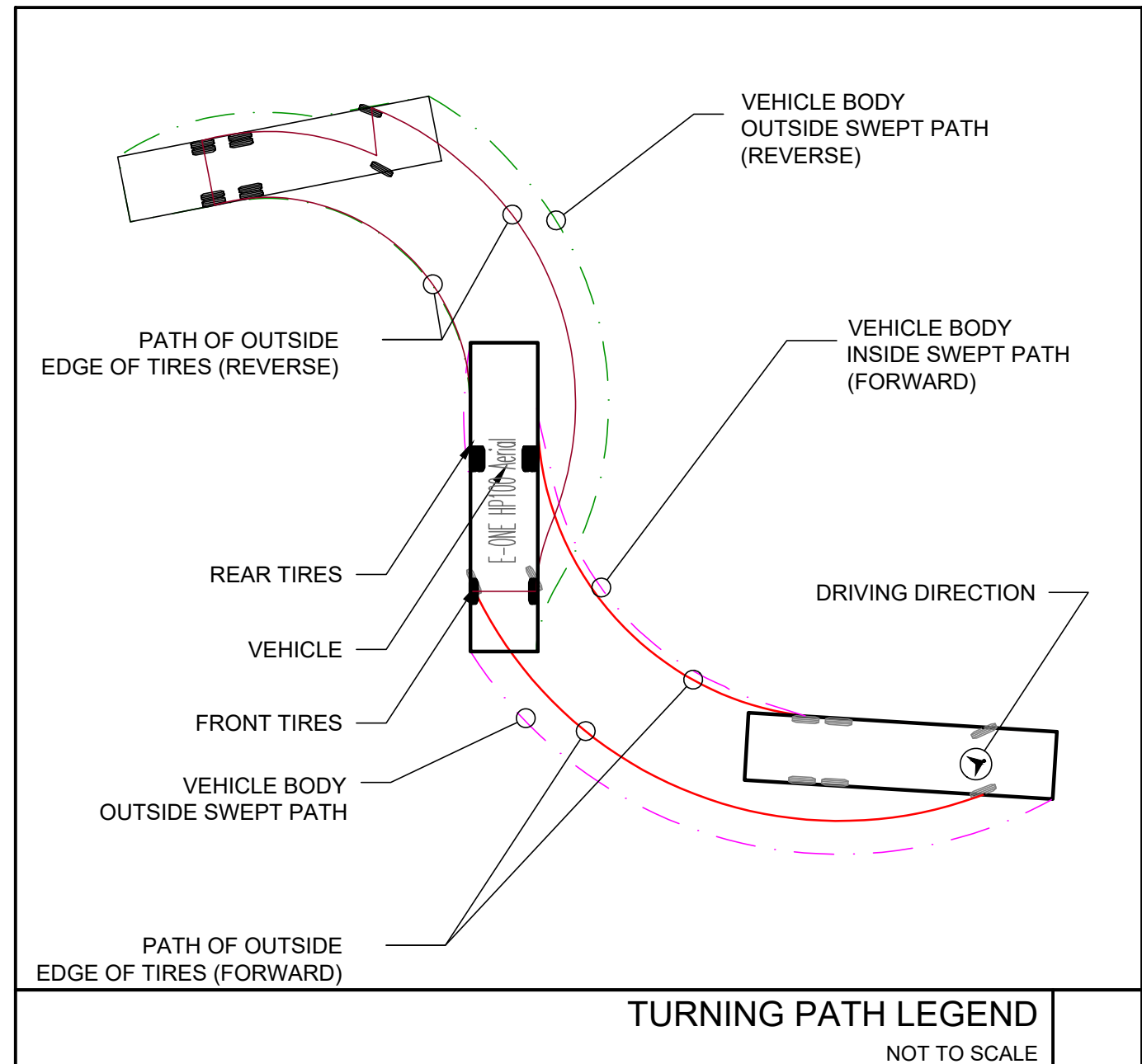
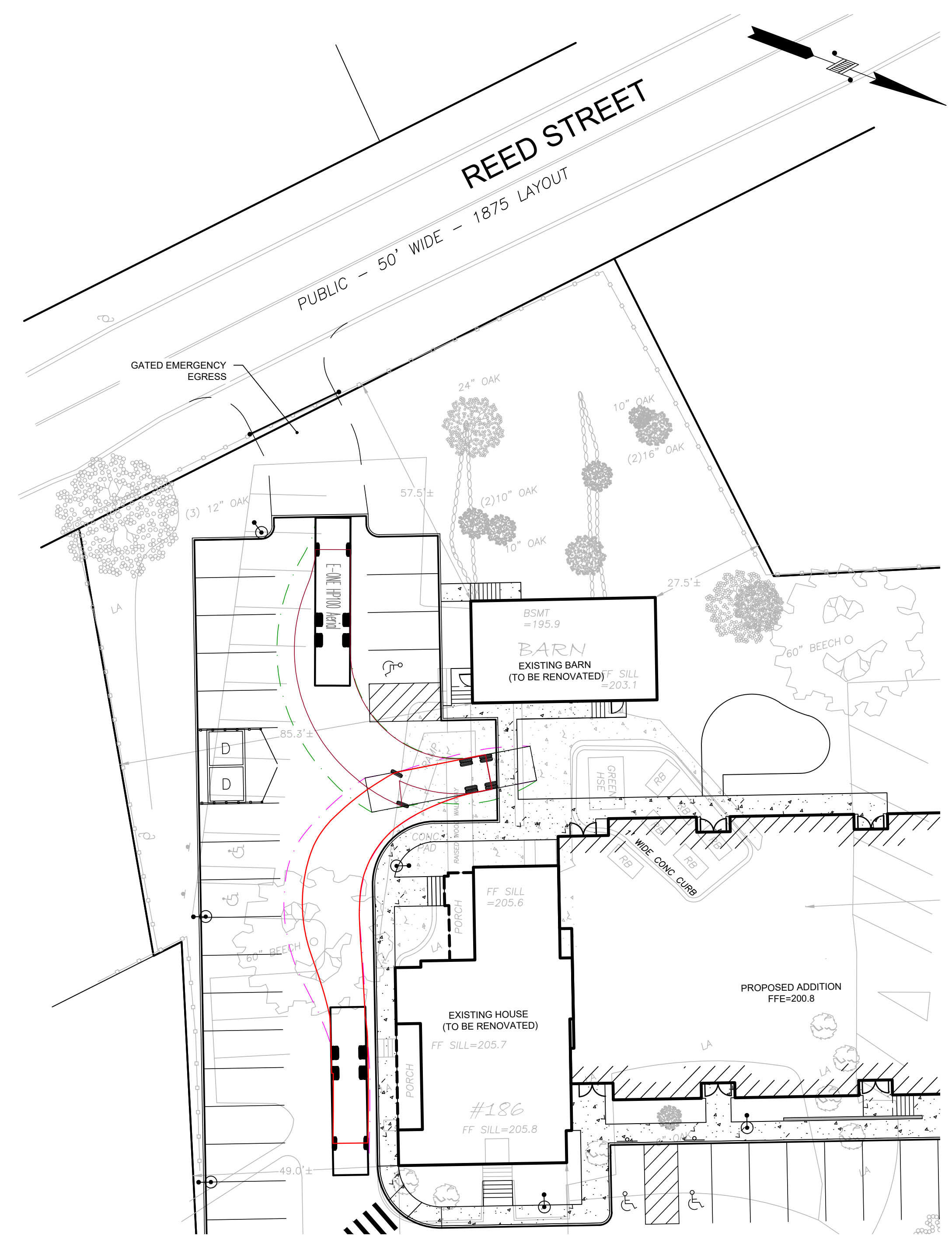
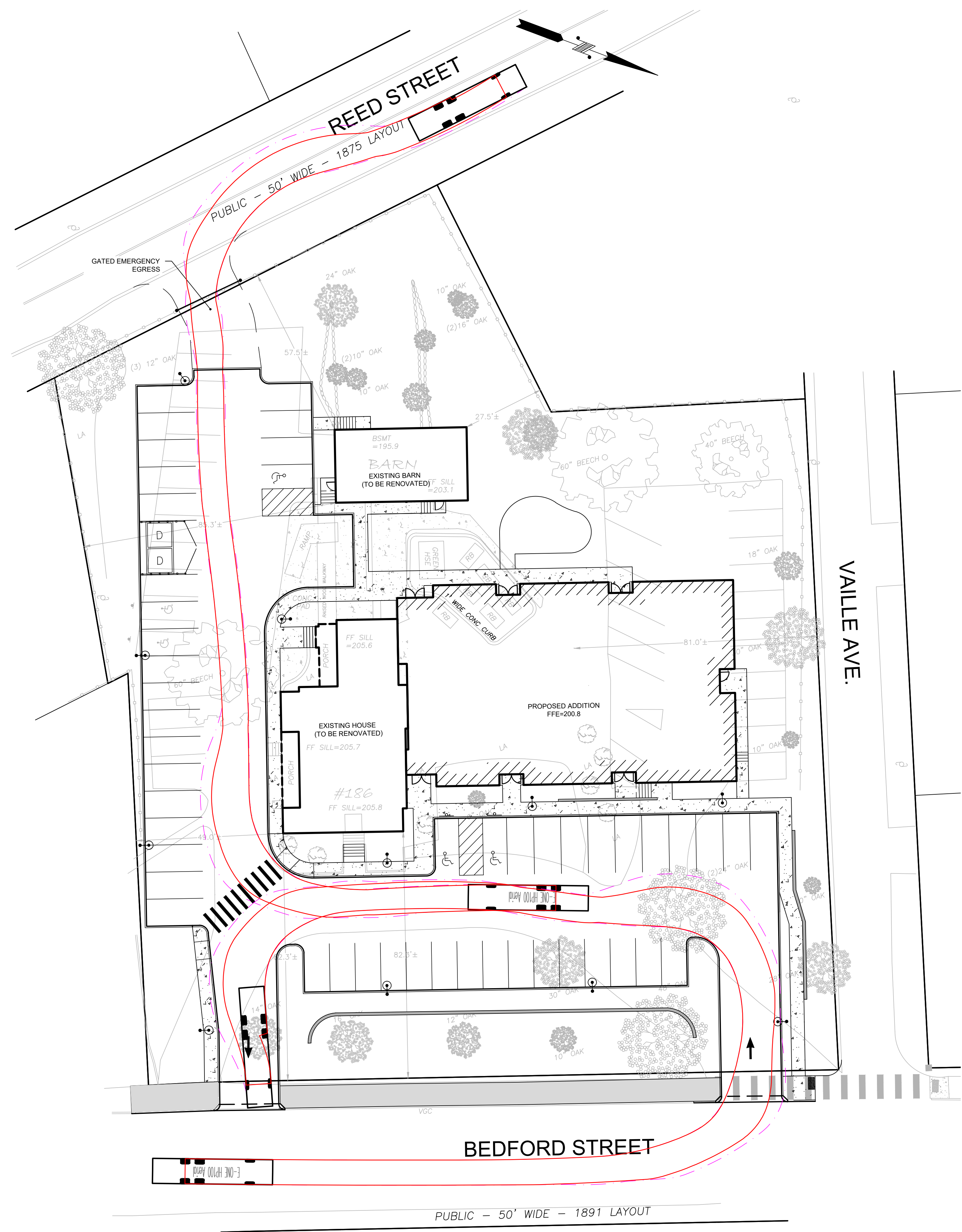
2	03/07/2019	PSDUP RESPONSE TO COMMENTS
1	02/21/2019	PSDUP RESPONSE TO COMMENTS
REV	DATE	DESCRIPTION

ISSUE TYPE:
PERMIT
 ISSUE DATE:
12/20/2018
 PROJECT NUMBER:
18002

DRAWN BY: JJP
 CHECKED BY: DJH
 Copyright (c) by Highpoint Engineering, Inc.
 All Rights Reserved.

FIRE APPARATUS
MANEUVERING
STUDY

SHEET NUMBER:



E-ONE HP100 Aerial
 Overall Length 40.000ft
 Overall Width 7.583ft
 Overall Body Height 11.000ft
 Min Body Ground Clearance 1.393ft
 Track Width 8.333ft
 Lock-to-lock time 6.008
 Max Wheel Angle 45.00

FIRETRUCK PROFILE
 NOT TO SCALE