

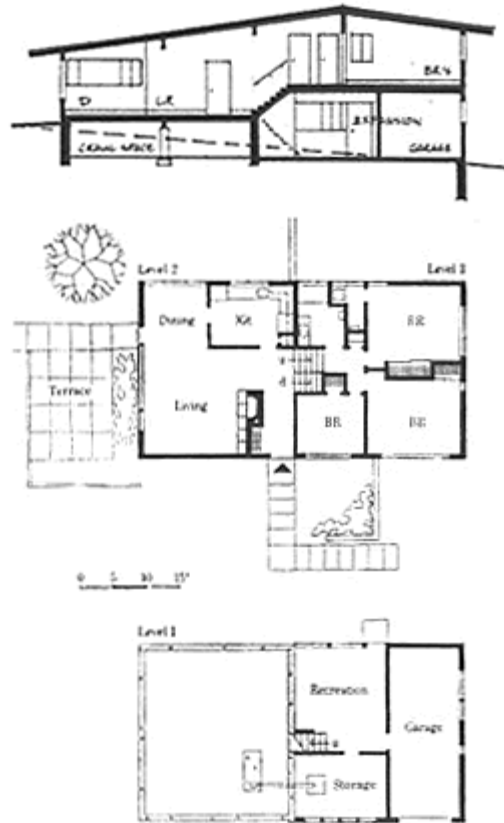
Area AL - The Grove

The Grove is a development of approximately forty contemporary style houses constructed between 1962 and 1965 in North Lexington, just south of the Rt. 95/128 corridor. It is the last of approximately six neighborhoods in Lexington which were developed with a split-level dwelling known as the "Peacock Farm" house (See Area S - Peacock Farm). The Grove includes homes on Angier Road, Burlington Street, Diamond Road, Grove Street, Mead Circle, North Emerson Road and White Terrace.



2 Angier Road

The "Peacock Farm" house met national acclaim in 1956-7 and won various prizes including first price in the national "Homes for Better Living" Contest in the American Homes magazine, sponsored by the American Institute of Architects. Designed by Cambridge architect and Lexington resident Walter Pierce, it was geared for young professionals, contained 1,825 square feet and sold for just over \$20,000.



As Lexington's population skyrocketed in the 1950s and 1960s, the town's farmland increasingly gave way to residential subdivisions. In this case, the land was the Johnson Farm, located north of the intersection of Grove Street and Burlington Street. Like the original Peacock Farms development, The Grove was developed by Edward Green and Harmon White (Green and White). The original subdivision plan for Pine Ridge (as The Grove was first called) was submitted in 1959 but was not approved until 1961. Most of the houses were constructed between 1962 and 1964 by Benjamin Franklin Homes of Newton.



3 Angier Road

Like Lexington's other modern neighborhoods, the development attracted scientists, professors and

engineers. Unlike some other local developments of the period, a community pool was never built in The Grove.

Although a number of the houses have been enlarged, there has been little infill construction and the neighborhood remains fairly cohesive today.



9 Diamond Road