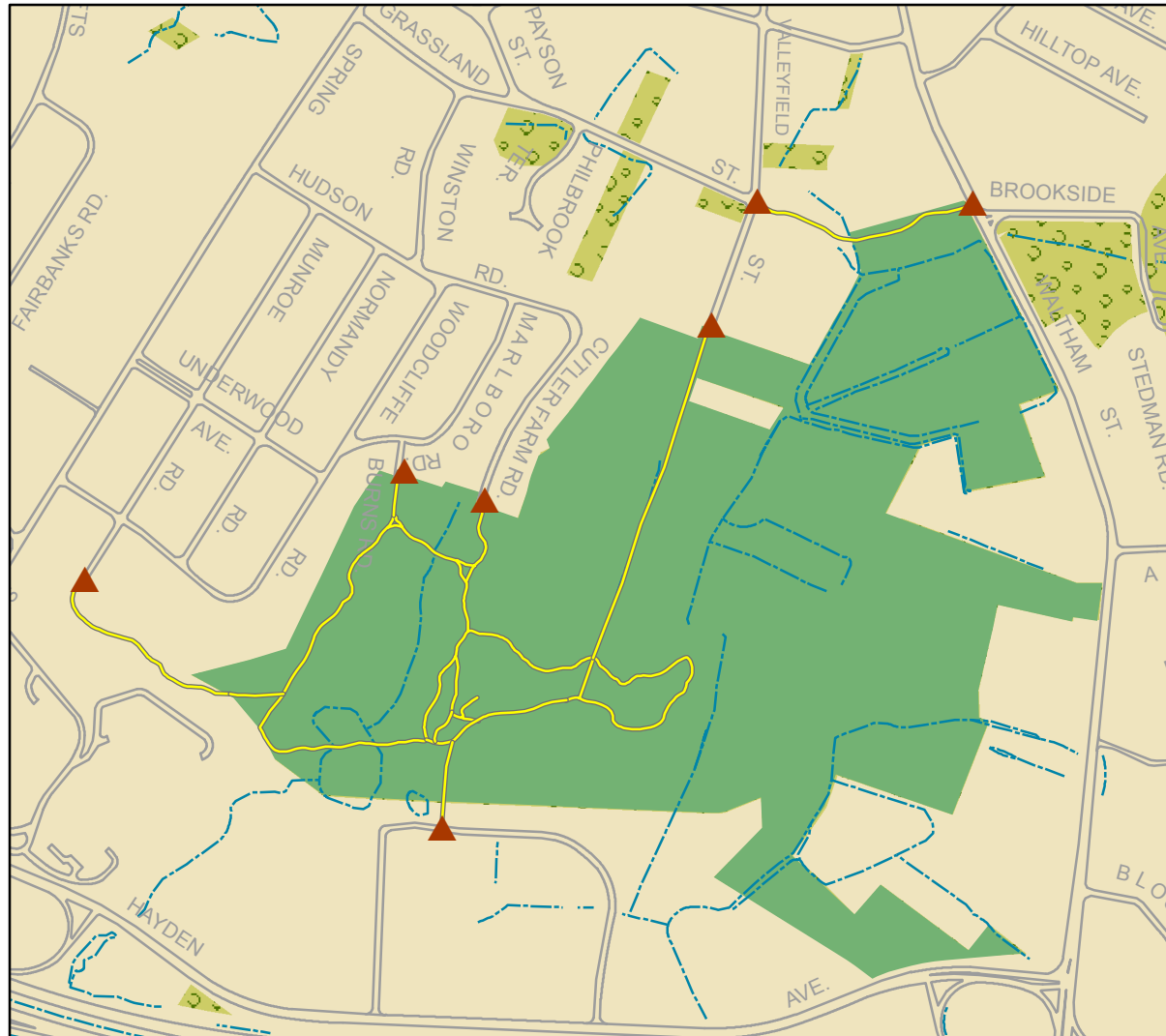


Lexington Conservation Lands

Town of Lexington Conservation Division • 1625 Massachusetts Avenue • Lexington, MA 02420 • 781.862.0500



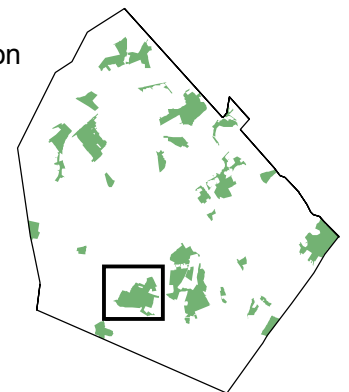
Hayden Woods

79 acres, 2 miles of trails. Hayden Woods is comprised primarily of oak-hickory-pine forest and red maple swamps. Trails wind past old field cedars, an abandoned rifle range, and many stone boundary walls, all signs of the area's many historical uses. Walk along one of Lexington's oldest roads, Old Shade Street, which was laid out in 1660 and was once part of an old Native American path. A short trail from Valleyfield Street to Waltham Street provides a connection to Clarke Middle School and Dunback Meadow.

Access is from Cutler Farm Road, Valleyfield Street, Munroe Road, Marlboro Road, and behind the offices at 45-55 Hayden Avenue, where parking in the office lot is permitted.

Legend

- Trail
- Conservation land
- Entry point
- Other open space
- Street
- Stream
- Water body



Data provided by the Town of Lexington and the Office of Geographic and Environmental Information (MassGIS), Commonwealth of Massachusetts Executive Office of Environmental Affairs

