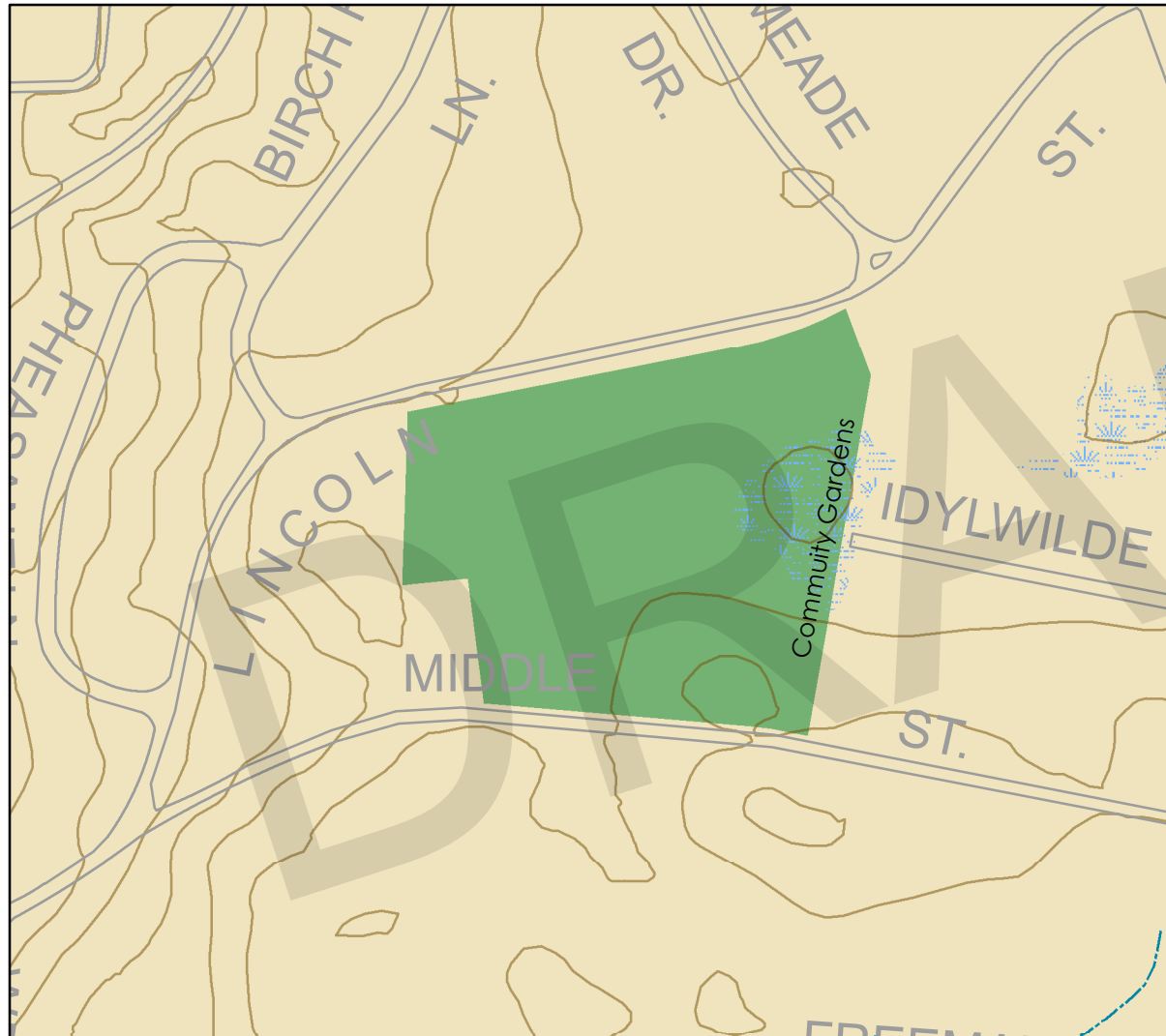


Lexington Conservation Lands

Town of Lexington Conservation Division • 1625 Massachusetts Avenue • Lexington, MA 02420 • 781.862.0500



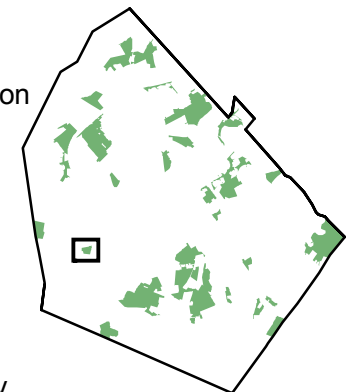
Idylwilde

9.5 acres. Idylwilde offers visitors a look at a field that had formerly been farmed for nearly 300 years. The field, surrounded by mature trees, now serves as a home to many field flowers and an occasional asparagus plant. There are no trails through the field. An intermittent stream runs along the eastern edge of the property, with a community garden located on the opposite side.

Access is from Middle Street and Lincoln Street, with limited parking available along Middle Street.

Legend

- Trail
- Conservation land
- Street
- Contour
- Stream
- Wetland
- Water body



Data provided by the Town of Lexington and the Office of Geographic and Environmental Information (MassGIS), Commonwealth of Massachusetts Executive Office of Environmental Affairs

