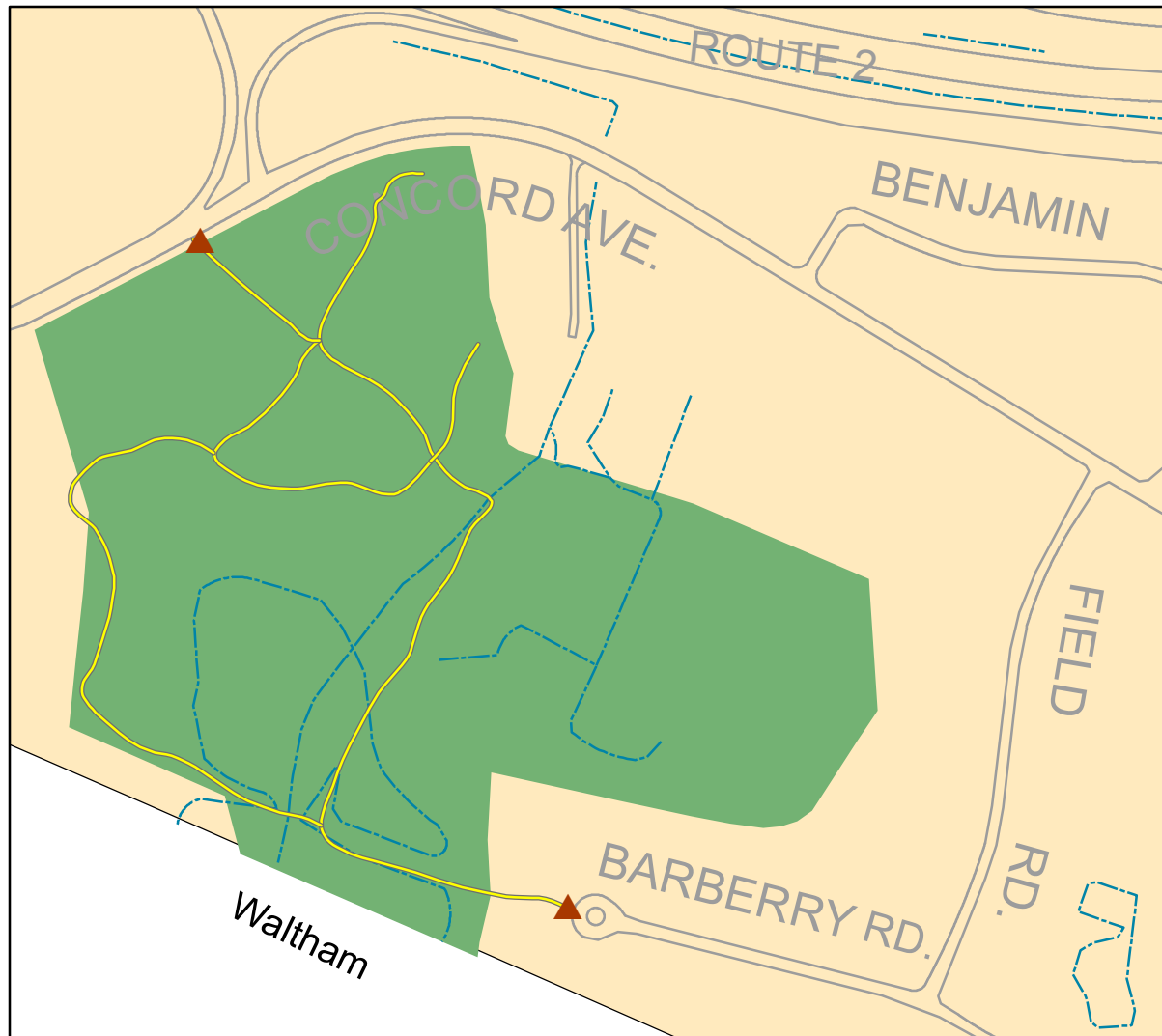


Lexington Conservation Lands

Town of Lexington Conservation Division • 1625 Massachusetts Avenue • Lexington, MA 02420 • 781.862.0500



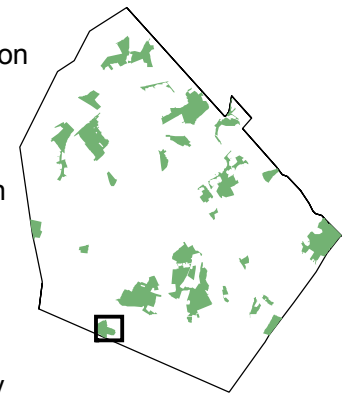
Juniper Hill

28 acres, 1 mile of trails. Juniper Hill offers lovely wooded paths that lead through a red maple swamp, upland oak woods, a grassy knoll, and a shaded cedar hill. The area was preserved and improved by members of the surrounding neighborhoods. This hill was part of a larger section of pastureland until the early 1900's, and stone walls along with wolf trees tell a part of its story. A stone bench on the top of the hill provides a place for visitors to rest.

Access is from the end of Barberry Road and from Concord Avenue.

Legend

- Trail
- Conservation land
- Entry point
- Other open space
- Street
- Stream
- Water body



Data provided by the Town of Lexington and the Office of Geographic and Environmental Information (MassGIS), Commonwealth of Massachusetts Executive Office of Environmental Affairs

