

# Lexington Conservation Lands

Town of Lexington Conservation Division • 1625 Massachusetts Avenue • Lexington, MA 02420 • 781.862.0500



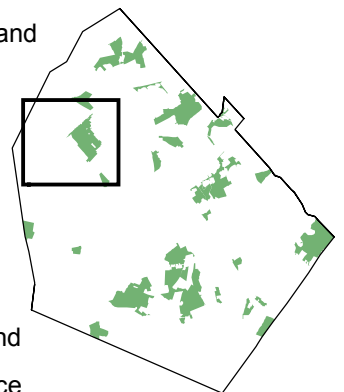
## Katahdin Woods

37.5 acres, 3.6 miles of trails (including trails on the Town Compost Facility). Katahdin Woods includes a peaceful beech-pine woods toward the west of the property and lower, wetland areas toward the east, which borders Route 128. A power line easement runs through the center of the property, where birds of prey are often seen hunting. Please note that some of the trails at Katahdin Woods are occasionally not passable due to water or utility work.

Access is from Wood Street, Bates Road, the 110 Hartwell Avenue parking lot, Hartwell Avenue, and the Minuteman Commuter Bikeway.

### Legend

- Trail
- Trail on private land
- Feature
- Entry point
- Street
- Stream
- Water body
- Conservation land
- Other open space



Data provided by the Town of Lexington and the Office of Geographic and Environmental Information (MassGIS), Commonwealth of Massachusetts Executive Office of Environmental Affairs

