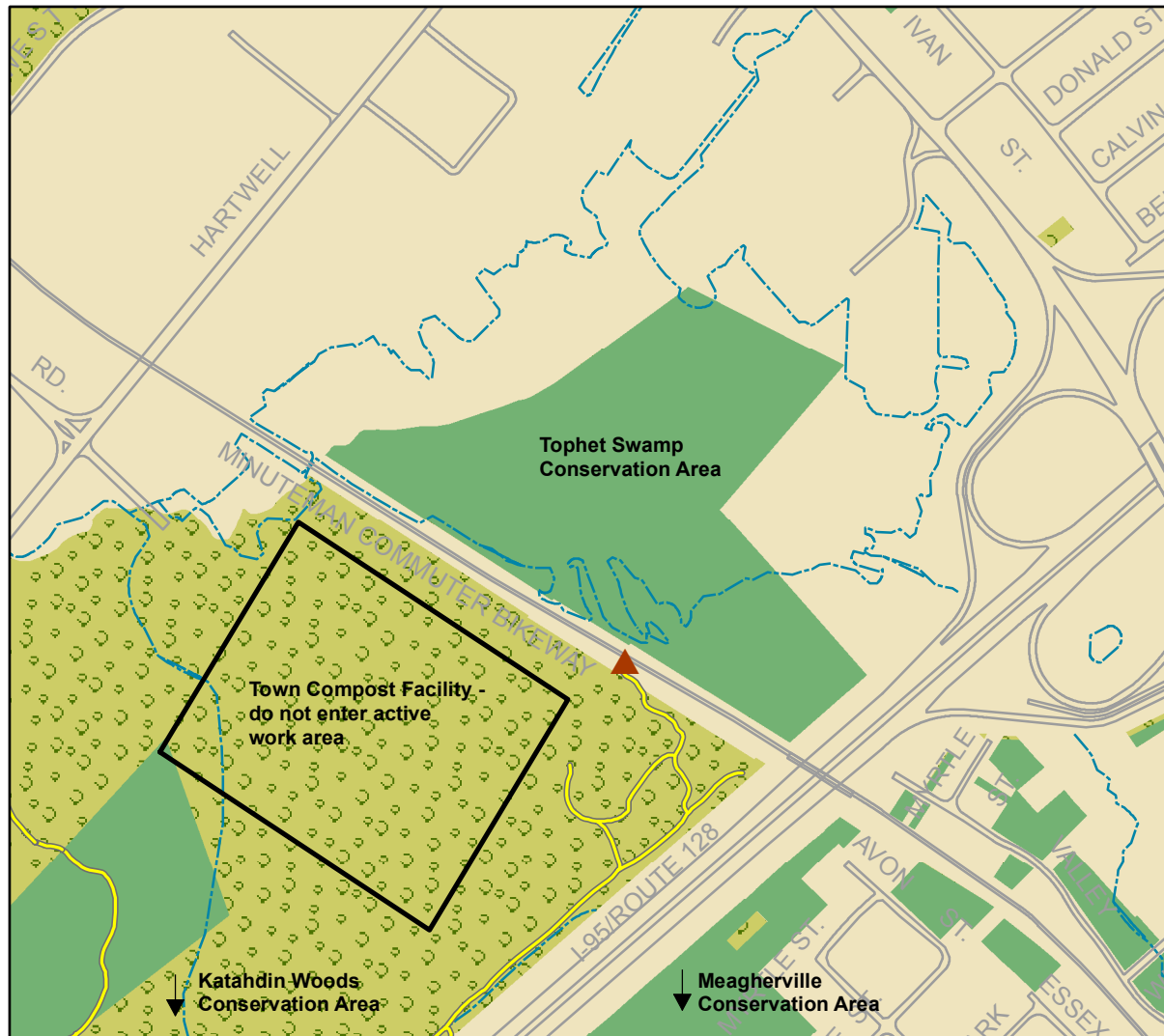
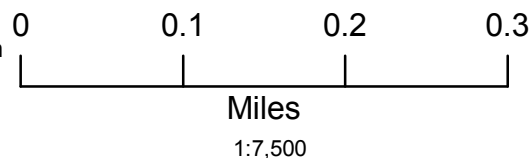


Lexington Conservation Lands

Town of Lexington Conservation Division • 1625 Massachusetts Avenue • Lexington, MA 02420 • 781.862.0500



Data provided by the Town of Lexington and the Office of Geographic and Environmental Information (MassGIS), Commonwealth of Massachusetts Executive Office of Environmental Affairs



Tophet Swamp

28 acres, connecting trail to Katahdin Woods conservation area. Tophet Swamp conservation area contains part of Tophet Swamp, the lowest point in Lexington at 110 feet above sea level. Although there are no trails in Tophet Swamp, the Minuteman Commuter Bikeway passes through the area and provides scenic viewing opportunities. Many birds, including hunting raptors, frequently visit Tophet Swamp, and the summer finds it teeming with red-winged blackbirds. A trail on the southern side of the bikeway leads into Katahdin Woods conservation area.

Access is from the Minuteman Commuter Bikeway between Hartwell Avenue and the I-95 overpass.

Legend

- Trail
- Trail on private land
- * Feature
- ▲ Entry point
- Street
- Stream
- Water body
- Conservation land
- Other open space

