



# *Definition Changes*

## *Zoning Bylaw*

- The genesis for this article is rooted in discrepancies between the Massachusetts Building Code and the Town's Zoning Bylaw.
- This has led to implementation challenges in how GFA is measured in both the lowest level of and / or the top level of newly constructed homes.



# *Definition Changes*

## *Zoning Bylaw*

- Comparing the two codes' common terms revealed a number of other clarifications that will assist Town Staff with implementation the Town's Zoning Bylaw and, in particular, the requirements for gross floor area.



# Definition Changes Zoning Bylaw



- Attic
- Half-Story
- Basement
- Crawl Space
- Story



# Definition Changes Zoning Bylaw

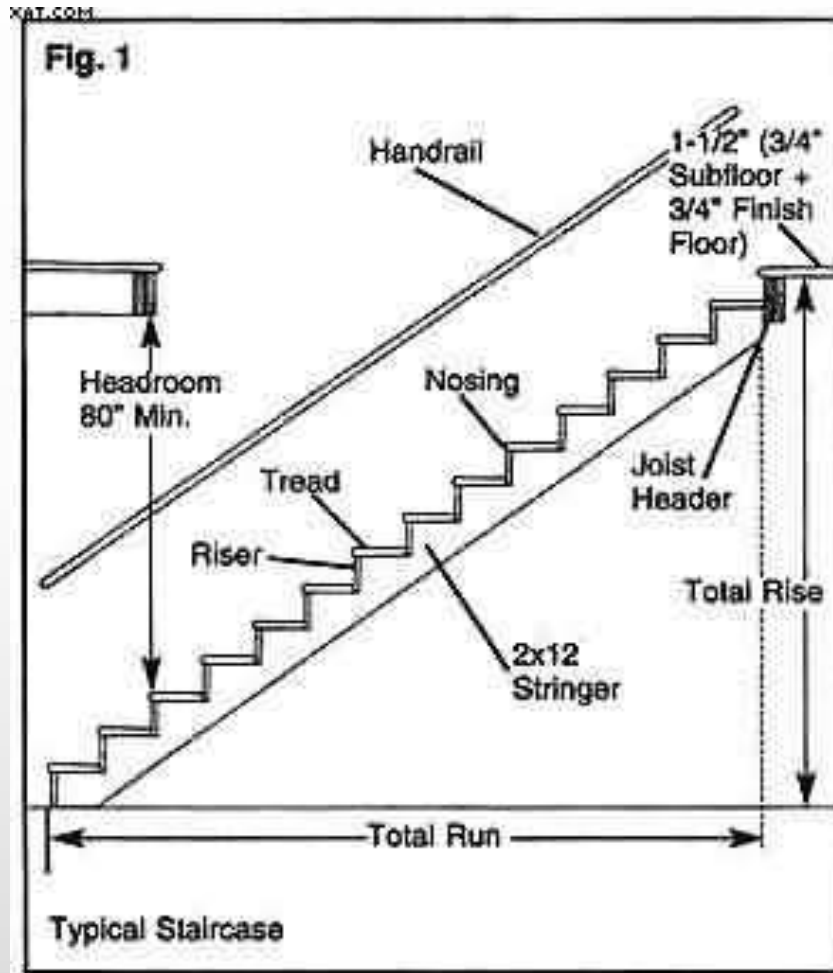


- Attic
- Half-Story
- Basement
- Crawl Space
- Story

<http://purchase1levitra.us/tag/30-wide-pull-down-attic-stairs/>



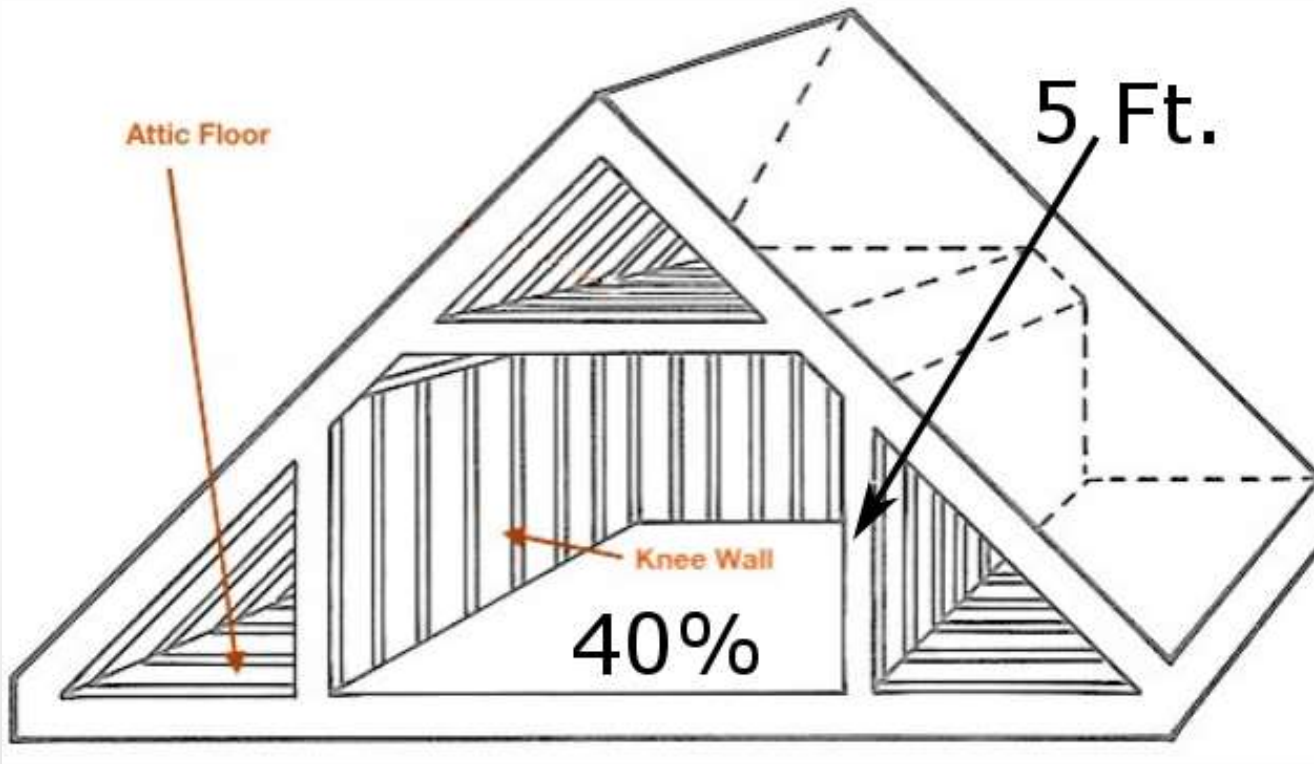
# Definition Changes Zoning Bylaw



- Half-Story
- Basement
- Crawl Space
- Story



# Definition Changes Zoning Bylaw

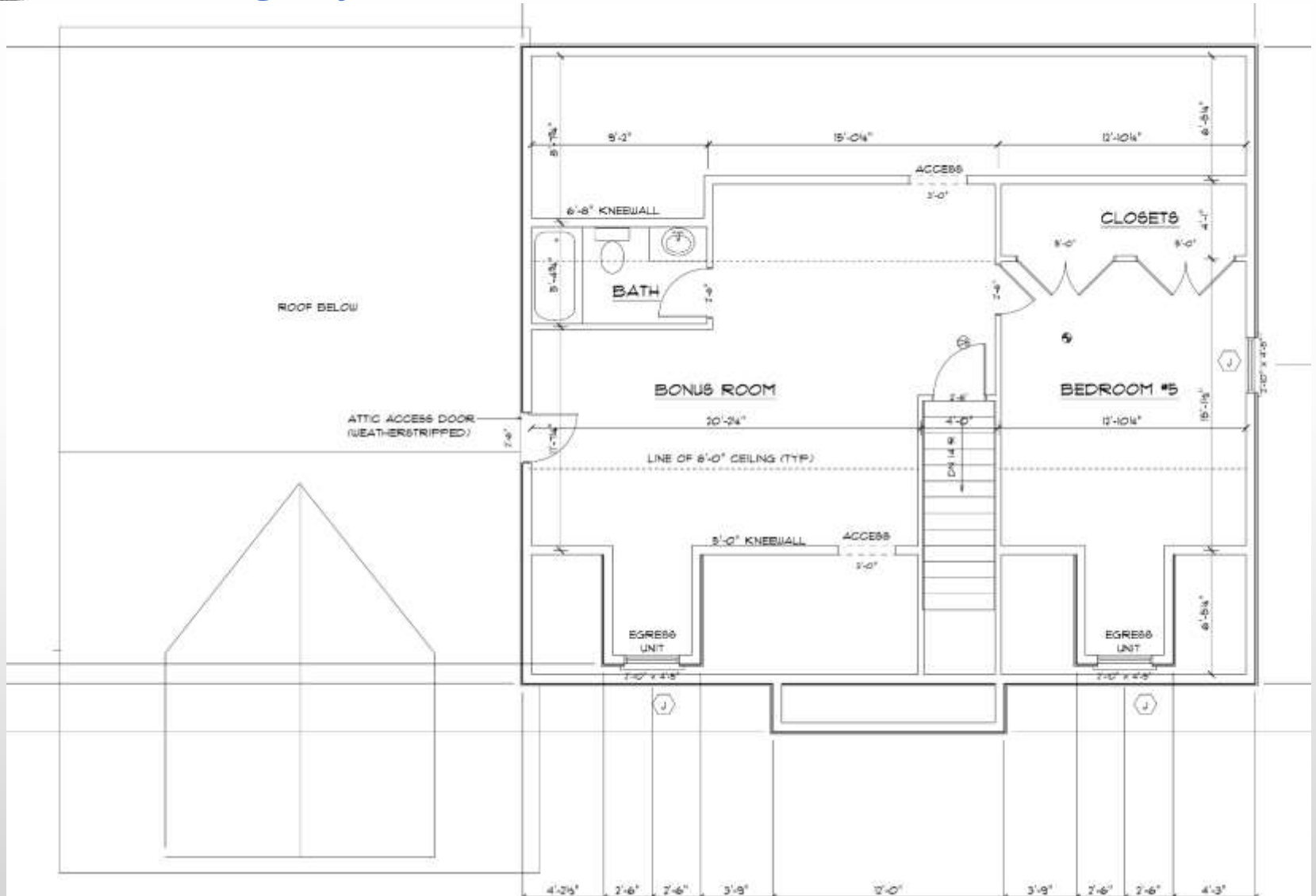


- Half-Story
- Basement
- Crawl Space
- Story



# Definition Changes

## Zoning Bylaw





# Definition Changes Zoning Bylaw



- Basement
- Crawl Space
- Story





# Definition Changes Zoning Bylaw



- Basement
- Crawl Space
- Story



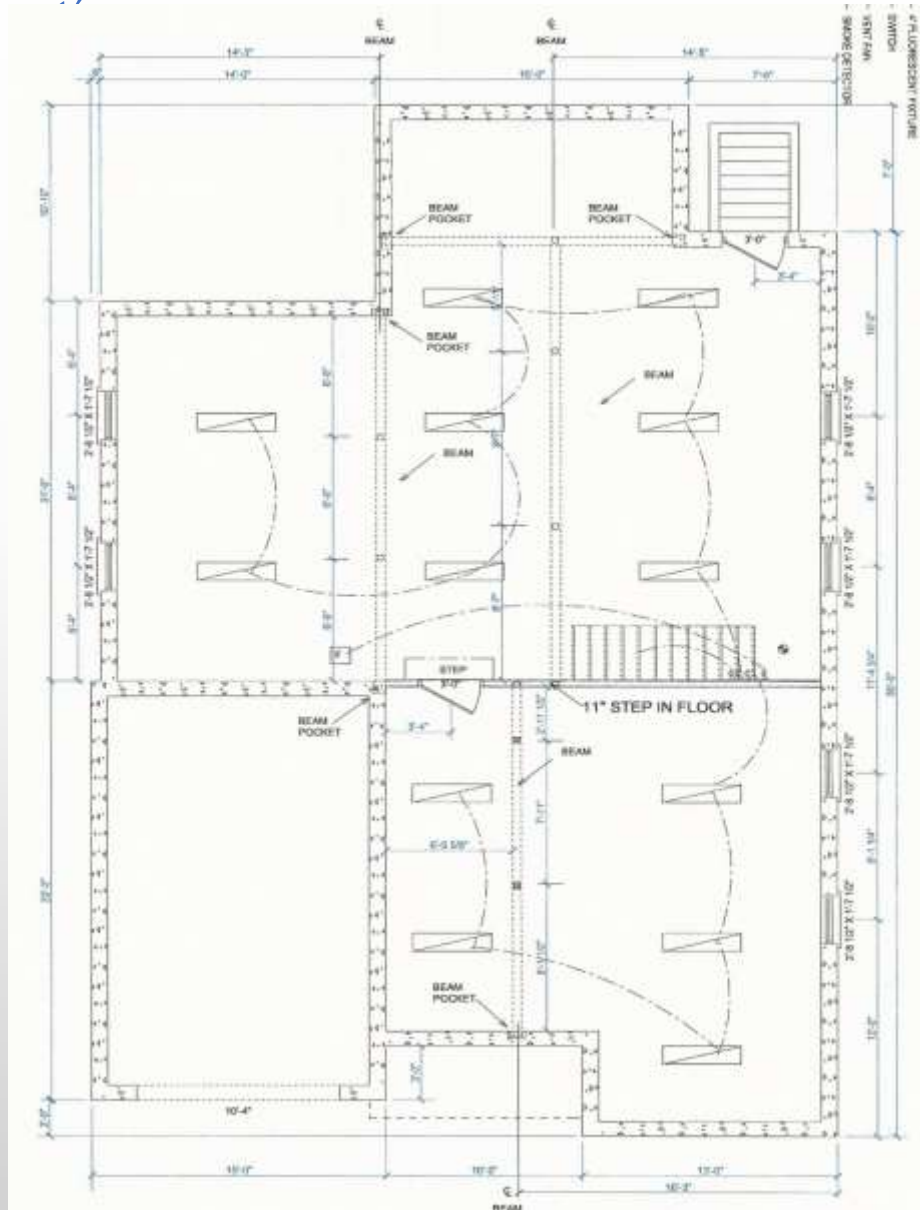
# Definition Changes Zoning Bylaw



- Crawl Space
- Story



# Definition Changes Zoning Bylaw





# Definition Changes Zoning Bylaw



6 Feet above  
Average Natural  
Grade = Story

- Story



# *Definition Changes* *Zoning Bylaw*

Questions?