

Lexington Conservation Lands

Town of Lexington Conservation Division • 1625 Massachusetts Avenue • Lexington, MA 02420 • 781.862.0500

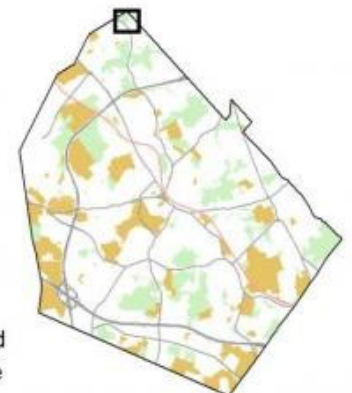


Wright Farm

13 acres, 0.61 miles of trails. Acquired by the Town in 2012, Wright Farm has large open fields, wetlands, and forest. It adjoins a narrow strip of Lexington conservation land and the Burlington Landlocked Forest, a large forested open space with an extensive trail system. There is an historic barn on the property, which the Town hopes to renovate into an educational building, and a garage that presently functions as a welcome kiosk. Wright Farm is nearly evenly split between meadows and white pine-mixed oak forest and is a good site for viewing bird species that are drawn to edge habitats. Access via Grove St at Carriage Dr. A loop trail marked with red arrows connects to Landlocked Forest at the back.

Legend

- ▲ Entry point
- * Feature
- Red loop 0.55 mi
- Connector trail
- Street
- - - Stream
- 10 ft contour
- Water body
- Wetland
- Conservation land
- Other open space



Data provided by the Town of Lexington and the Office of Geographic and Environmental Information (MassGIS), Commonwealth of Massachusetts Executive Office of Environmental Affairs