

Drop Off Recycling Services at Hartwell Ave

The Town is pleased to offer a number of year round and seasonal recycling and composting related services at our Hartwell Avenue facility.

Leaf & Yard Waste

- ◆ Leaves, grass clippings, flower and garden plants, wood chips, pine needles, organic vegetation and brush (4" diameter max).
- ◆ Paper compostable bags accepted. No plastic bags.



Christmas Trees

- ◆ Remove all objects (e.g. ornaments, tinsel, lights, plastic bags).



Textiles

- ◆ Clothes, shoes and related textiles.



Books & Other Media

- ◆ Includes books, CDs, DVDs and video games.

Hartwell Avenue Hours of Operation

7/18 – 9/7/18	Mon-Fri 7:30am-3pm Sunday* 8am-4pm
9/8/18 – 11/30/18	Mon-Fri 7:30am-4:30pm Sat. & Sun. 8am-4pm
12/1/18 – 3/17/19**	Mon-Fri 7:30am-3pm Sundays only 8am-4pm (thru 12/21)
3/18/19 – 4/7/19	Mon-Fri 7:30am-3pm closed Sat & Sun
4/8/19 – 6/30/19	Mon-Fri 7:30am-4:30pm Sat&Sun 8am-4pm Closed Easter

* Also open on HHP event Saturdays
** Weather permitting

Hazardous Household Products

- ◆ Includes household cleaners, oil, gasoline & related auto products, lawn & garden chemicals, oil (no latex/water) based paints & stains, varnishes & wood preservatives, fluorescent bulbs, propane tanks. Visit the Board of Health or website for a complete list of acceptable and unacceptable materials. Eight events per year, check calendar.
- ◆ Sort, pack, deliver, be safe and stay in car.



Scrap Metal

- ◆ Includes items such as a bike, filing cabinet, desk, grill (w/o propane tank) metal box spring, wood stove, antennas, pots & pans, curtain rods, fans, gutters, downspouts, railings, ladders, signs, sinks, swing sets, toasters, and wheelbarrows.



Universal Waste

- ◆ Includes button cell batteries, nickel cadmium rechargeable batteries and other mercury items.



Cardboard

- ◆ Boxes must be flattened. No soiled cardboard.

Rocks, Concrete & Asphalt

- ◆ Maximum amount of three 5-gallon buckets worth per visit. Bricks not accepted.

Please visit www.lexington.ma.gov/trash for additional information and related programmatic updates and events throughout the year.

Other Related Services and Information

HOME COMPOSTING & RECYCLE BINS

Divert food scraps and yard waste from trash. Two types of home compost bins (\$25 each) are available. Replacement recycling bins are also available. Call or visit DPW at 781 274-8300 (x1).

MEDICAL WASTE COLLECTIONS

Bring sharps, needles, syringes (in original containers) and expired medicine to these Board of Health (tel.# 781 698-4503) sponsored collections. Events to be held in the parking lot behind Town Hall on Wed. Oct. 3, 2018 (5-7pm), Sat. Oct. 13, 2018 (9am-12pm), Sat. March 23, 2019 (9am-12pm) & Wed. June 5, 2019 (5-7pm).

PAPER SHREDDING EVENTS

Have your paper securely shredded. Two community shred events will held from 8am to Noon on Sat. Sept. 22, 2018 and Sat. May 4, 2019 at the Hartwell Ave facility.



CARDBOARD

Bring flattened cardboard to containers behind the Hosmer House in the Town Hall parking lot, the Grace Chapel parking lot off of Worthen Road or the Hartwell Ave facility. No soiled cardboard.

TEXTILES/CLOTHING

Bring clothes, shoes and related textiles to containers available at all eight public schools and the Hartwell Ave facility. Visit the website for specific locations and a more detailed list of acceptable and unacceptable items.

DONATE/ REUSE

Don't Just Throw It Away! Visit websites such as <https://groups.freecycle.org/group/LexingtonMA/posts/all> and <https://recyclesearch.com/profile/ma> to search for new "homes" to donate household items and/or to support charitable organizations.

IMPORTANT PHONE/ CONTACT INFORMATION:

For missed trash or recycling collection, call EL Harvey at 800 321-3002. For general information about recycling and trash services, visit www.lexingtonma.gov/trash or call the DPW at 781 274-8300 (x1).

PRSRST STD
U.S. POSTAGE
PAID
PERMIT #3
NO. BILLERICA, MA

Town of Lexington
Department of Public Works
Lexington, MA 02420



HOLD ON TO THIS CALENDAR

ECRWSS
Residential Customer
Lexington, MA

Recycling is Everybody's Job



For a Safer Environment

Important Recycling & Solid Waste Information for 2018 - 2019

Printed with soy based ink on 30% Post Consumer Recycled Paper

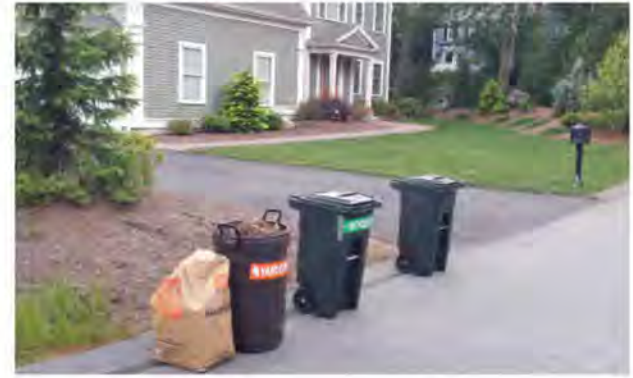


Dear Lexington Resident

We are pleased to introduce EL Harvey & Sons, Inc., a local company with over 100 years of experience in the industry, as our recycling and solid waste vendor. Weekly curbside services will continue on your regular collection day with the addition of single stream recycling being made available to residents. This flyer includes the 2018-2019 Collection Calendar and an overview of the many related curbside and drop-off services. Please visit our website at www.lexingtonma.gov/trash for additional details and information about ongoing related events and programmatic updates.

The cooperation of Town departments and local groups, the partnership with our collection vendor and the active participation of Lexington residents are the foundation for our successful program. In the year ahead, we look forward to building on this legacy of generating clean recyclables, promoting sustainable practices and being a leader in waste reduction efforts.

*Robert Beaudoin, Supt. of Environmental Service
Department of Public Works*



harvey

LEXINGTON COLLECTION CALENDAR 2018 - 2019

JULY 2018						
Su	Mo	Tu	We	Th	Fr	Sa
1	2	3	4	5	6	7
8	9	10	11	12	13	14
15	16	17	18	19	20	21
22	23	24	25	26	27	28
29	30	31				

AUGUST 2018						
Su	Mo	Tu	We	Th	Fr	Sa
			1	2	3	4
5	6	7	8	9	10	11
12	13	14	15	16	17	18
19	20	21	22	23	24	25
26	27	28	29	30	31	

SEPTEMBER 2018						
Su	Mo	Tu	We	Th	Fr	Sa
						1
2	3	4	5	6	7	8
9	10	11	12	13	14	15
16	17	18	19	20	21	22
23	24	25	26	27	28	29
30						

OCTOBER 2018						
Su	Mo	Tu	We	Th	Fr	Sa
	1	2	3	4	5	6
7	8	9	10	11	12	13
14	15	16	17	18	19	20
21	22	23	24	25	26	27
28	29	30	31			

NOVEMBER 2018						
Su	Mo	Tu	We	Th	Fr	Sa
				1	2	3
4	5	6	7	8	9	10
11	12	13	14	15	16	17
18	19	20	21	22	23	24
25	26	27	28	29	30	

DECEMBER 2018						
Su	Mo	Tu	We	Th	Fr	Sa
						1
2	3	4	5	6	7	8
9	10	11	12	13	14	15
16	17	18	19	20	21	22
23	24	25	26	27	28	29
30	31					

JANUARY 2019						
Su	Mo	Tu	We	Th	Fr	Sa
			1	2	3	4
5	6	7	8	9	10	11
12	13	14	15	16	17	18
19	20	21	22	23	24	25
26	27	28	29	30	31	

FEBRUARY 2019						
Su	Mo	Tu	We	Th	Fr	Sa
					1	2
3	4	5	6	7	8	9
10	11	12	13	14	15	16
17	18	19	20	21	22	23
24	25	26	27	28		

MARCH 2019						
Su	Mo	Tu	We	Th	Fr	Sa
					1	2
3	4	5	6	7	8	9
10	11	12	13	14	15	16
17	18	19	20	21	22	23
24	25	26	27	28	29	30
31						

APRIL 2019						
Su	Mo	Tu	We	Th	Fr	Sa
	1	2	3	4	5	6
7	8	9	10	11	12	13
14	15	16	17	18	19	20
21	22	23	24	25	26	27
28	29	30				

MAY 2019						
Su	Mo	Tu	We	Th	Fr	Sa
				1	2	3
4	5	6	7	8	9	10
11	12	13	14	15	16	17
18	19	20	21	22	23	24
25	26	27	28	29	30	31

JUNE 2019						
Su	Mo	Tu	We	Th	Fr	Sa
						1
2	3	4	5	6	7	8
9	10	11	12	13	14	15
16	17	18	19	20	21	22
23	24	25	26	27	28	29
30						

-  **Observed Holidays:** (No curbside collection) one day delay rest of the week
-  **Curbside Yard Waste Collections:** See shaded area on calendar
-  **Christmas Tree Collection:** Dec. 31, 2018 and Jan. 2 thru 5, 2019 and January 7 thru 11, 2019
-  **Medical Waste Collections:** Wed, October 3, 2018: 5pm - 7pm and Sat, October 13, 2018, 9am - Noon, Sat. March 23, 2019: 9am - Noon and Wed. June 5, 2019, 5pm - 7pm.
-  **HHP (Hazardous Household Products) Events:** Collections Start at 9am - 2pm at Hartwell Avenue on July 14, August 11, Sept. 16, October 13, Nov. 3, 2018. April 20, May 18, June 15, 2019
-  **Paper Shredding Event:** Sat. Sept., 22, 2018 8 am - 12 Noon and Sat May 4, 2019 8 am - 12 Noon at Hartwell Ave

Curbside Trash Service (Weekly)

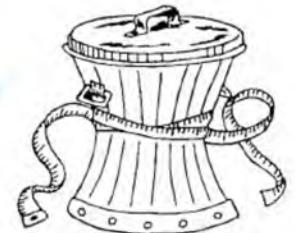
Household trash service will continue to be provided on a weekly basis on your regular collection day. Trash must be secured in a lidded barrel or durable bag when placed at the curb separate from recyclables.

- ◆ Place trash at curb before 7AM on your collection day.
- ◆ 50 pound limit per barrel / bag to help reduce worker injuries. 32 gallon barrel limit.
- ◆ Bulky Items - household furniture such as a sofa, chair, mattress & box spring, and carpet (cut in 4' lengths, rolled and tied). Visit website for more details. One item per week placed next to trash.
- ◆ For missed collections, call EL Harvey at 800-321-3002.
- ◆ For general trash questions, call DPW at 781 274-8300 (press 1).

DID YOU KNOW...?

Massachusetts prohibits the disposal in trash of the following waste ban items:

- ◆ Paper and cardboard
- ◆ Bottles and cans
- ◆ Leaves and yard waste
- ◆ Car batteries
- ◆ TVs and computers
- ◆ Large home appliances
- ◆ Construction and demolition debris



Be sure to keep these items out of your trash by recycling them.

Curbside Recycling Services

The Town is pleased to offer a number of curbside recycling and yard waste related services on a year round and seasonal basis.

Household Recyclables (Weekly)

Residents now have the option to either continue putting clean recyclables out at the curb in a dual stream fashion or in a single stream fashion. Single stream recycling is simply recycling the same items as we have been, but without the need to separate paper products from plastic, glass and metal containers. EL Harvey has their own recycling sorting facility and will be using new trucks designed to efficiently collect recyclables mixed together.

The availability of single stream recycling should allow residents to minimize trips to the curb through the use of clearly marked containers such as an old trash barrel (stickers available at DPW). Recycling bins may also continue to be used. Plastic bags are not part of the curbside recycling program - either as a recyclable or as a "container" to put recyclables at the curb.



WHY PREPARE RECYCLABLES?

Place recyclables separate from trash and in a secure fashion at the curb before 7AM. Visit the website for a more complete list of recyclable items and for best management practices for both curbside placement and preparing them for the marketplace. Clean recyclables have value. We are seeking your help in reaching a goal of recycling 4500 tons in FY19 and will be providing monthly updates on the website. Thank you for recycling everything possible.

Top 5 Most Wanted Recyclables

- ◆ Steel/ Aluminum containers
- ◆ Plastic jugs, bottles & tubs
- ◆ Cardboard (flattened)
- ◆ Cartons (e.g. milk, juice)
- ◆ Mail, catalogues, magazines



Top 5 Most Prohibited Items

- ◆ Plastic bags, film & K-cups
- ◆ Food waste & debris
- ◆ Tanglers (e.g. hose, wire)
- ◆ Clothing/ textiles
- ◆ Foam (e.g. packaging, cups)



Other Collection Services

YARD WASTE: SEASONAL - CHECK CALENDAR

Leaves, grass clippings, flower and garden plants, wood chips, pine needles, organic vegetation, brush (1" or less diameter).

Visit website for details about acceptable containers for placing yard waste curbside, a list of unacceptable materials and the availability of orange yard waste stickers to mark barrels.



CHRISTMAS TREES

For Christmas Trees, remove all objects (e.g. ornaments, tinsel, lights, plastic bags), check Collection Calendar and place separate from other materials at curb on your regular collection day.



SPECIAL ITEMS (WEEKLY)

The following items are collected on a scheduled basis only. Contact EL Harvey & Sons at 800 321-3002 to schedule a pickup for the same day as your weekly recycle/trash collection. Visit the website for additional details.

CRT'S TV'S

CRT's TV's, computers and other miscellaneous electronics.



WHITE GOODS

White Goods Appliances such as refrigerators, air conditioners, clothes washers & dryers, stoves, microwaves, freezers, water heaters and dehumidifiers.



SCRAP METAL

Scrap Metal Large items such as a lawnmower, bike, filing cabinet, desk, grill (w/o propane tank) metal box spring and wood stove.



For missed collections, call EL Harvey at 800-321-3002. For general info call DPW at 781-274-8300 (x1) or visit www.lexingtonma.gov/trash